

DESCRIPTION

- Metal and brass construction with Chrome plated finish, also in Classic Brushed Nickel (CBN) finish
- Pressure balancing cycle valve
- Contains: hand-held shower, with non-positive pause, 30" slide bar, drop ell, 69" metal hose and mounting hardware
- **Slide bar is NOT DESIGNED TO BE A GRAB BAR**
- Supplied with vandal resistant screws
- Quick cleaning rubber nozzles

OPERATION

- Temperature valve has ADA compliant lever style handle
- Handle operates counterclockwise through a 270° arc with off at 6 o'clock, and maximum hot at the 9 o'clock position. Shut off in clockwise direction
- Adjustable temperature limit stop
- Pressure balancing mechanism maintains selected discharge temperature to $\pm 3.6^\circ$
- Single function spray pattern
- Easy to operate pause button (reduces the flow of water to a trickle)

FLOW

- **T8346** (2.5gpm/9.5 lpm) - Chrome finish
- **T8346CBN** (2.5gpm/9.5 lpm) - CBN finish
- **T8346EP15** (1.5gpm/5.7 lpm) - Chrome finish; **WaterSense® Certified**
- **T8346EP15CBN** (1.5gpm/5.7 lpm) - CBN finish; **WaterSense® Certified**

CARTRIDGE

- Pair with a brass Posi-Temp rough-in valve:
- 8370HD*: 1/2" CC connection without integral stops
- 8371HD*: 1/2" CC connection with integral stops
- 8372HD*: 1/2" IPS connection with integral stops
- 8373HD*: 1/2" PEX connection with integral stops
- 8374HD*: 1/2" CPVC connection with integral stops
- 8375HD*: 1/2" UPONOR connection with integral stops
- *Includes the 1222HD Brass Posi-Temp Cartridge
- Accommodates back to back installations

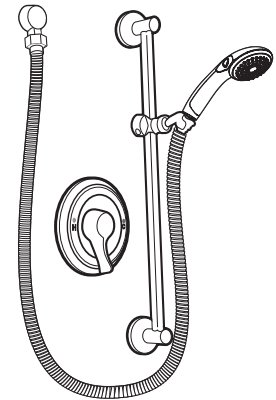
STANDARDS

- Third party certified to WaterSense® (only applies to 1.5 gpm)
- ASME A112.18.1/CSA B125.1 and all applicable requirements referenced therein
- Backflow prevention compliance through ASME A112.18.3

- **ADA** for lever handle

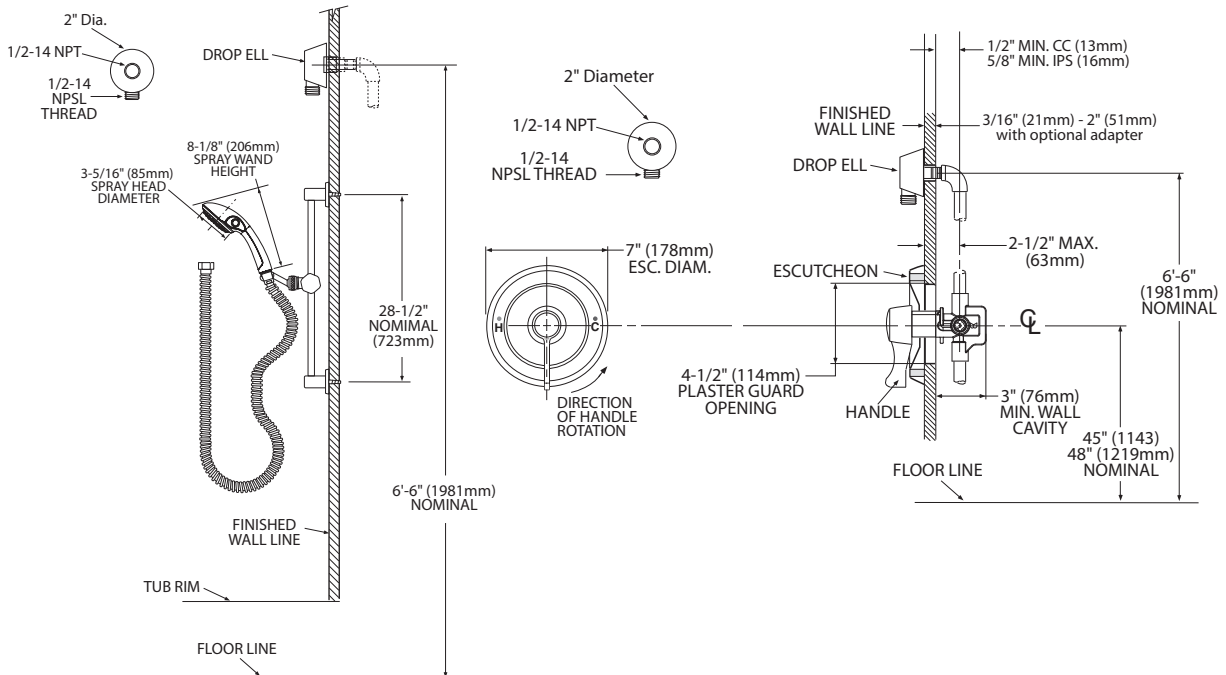
WARRANTY

- Warranted for 5 years against material or manufacturing defects



Single-Handle Posi-Temp Handheld Shower System

Model: T8346, T8346CBN



*Refer to (ADAAG) guidelines or local codes for proper ADA installation.

CRITICAL DIMENSIONS

(DO NOT SCALE)